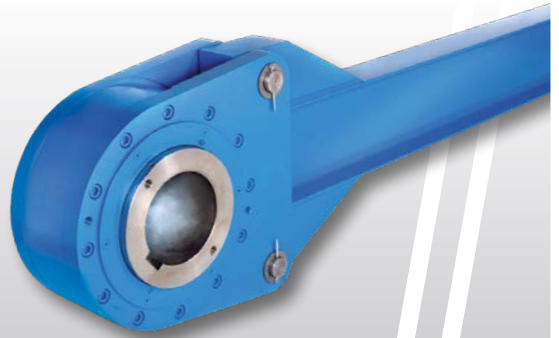
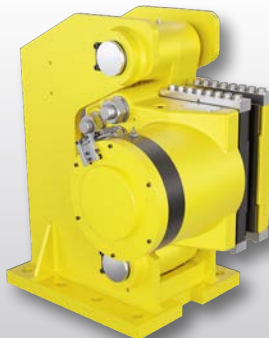


Your benefit in mining technology



Company profile

Innovative achievements have made RINGSPANN a leading manufacturer for Power Transmission Components, Clamping Fixtures and Remote Control Systems. Many well-known companies from the machine building, the material handling, the energy as well as the aerospace industries successfully work with RINGSPANN. With more than 80 years' experience in development, design and manufacturing, we are experts in intelligent technical solutions.

From our headquarters in Bad Homburg, Germany, more than 500 employees in 21 international companies provide personal service onsite and ensure speedy and reliable delivery. Manufacturing plants in the most important regions of the world make flexible and customer-oriented production possible.

Customer service is close to our heart; we want you to continue to choose RINGSPANN.

Headquarters

Bad Homburg, Germany

Founded

1944

Subsidiaries

21

Manufacturing plants

10

Employees

> 500

Customers

> 7,500 a year

Product range

Power Transmission
Clamping Fixtures
Remote Control Systems



RINGSPANN GmbH, Germany
Headquarters and
Plant Freewheels



RINGSPANN GmbH, Germany
Plant Brakes, Couplings,
Clamping Fixtures and
Shaft-Hub-Connections



RINGSPANN Kempf GmbH,
Germany
Plant Cardan Shafts



RINGSPANN RCS GmbH,
Germany
Plant Remote Control Systems



RINGSPANN Benelux B.V.,
Netherlands



RINGSPANN (U.K.) LTD.,
Great Britain



RINGSPANN France S.A.,
France



RINGSPANN CORPORATION,
USA



RINGSPANN Sudamérica SpA,
Chile



RINGSPANN do Brasil Ltda.,
Brazil



RINGSPANN South Africa (Pty) Ltd.,
South Africa



RINGSPANN Nordic AB,
Sweden



RINGSPANN Austria GmbH,
Austria



RINGSPANN Bosanska Krupa
d.o.o., Bosnia and Herzegovina



RINGSPANN Italia S.r.l.,
Italy



RINGSPANN AG,
Switzerland



RINGSPANN IBERICA S.A.,
Spain



RINGSPANN Turkey Tic. Ltd. Şti.,
Turkey



RINGSPANN Power Transmission
(Tianjin) Co., Ltd., China

RINGSPANN Korea Ltd.,
South Korea

RINGSPANN Singapore Pte. Ltd.,
Singapore



RINGSPANN Australia Pty Ltd.,
Australia



RINGSPANN Power Transmission
India Pvt. Ltd., India

Key

- Sales company
- Manufacturing plant
- Sales partner



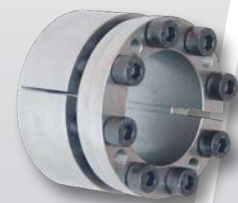
1 Shrink Discs
to connect hollow gearbox shafts
with pulley shafts



2 High Speed Backstops
to prevent reverse motion of conveyor belts



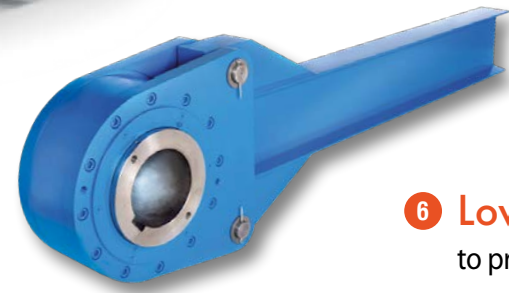
3 Drum Brakes
for braking and holding of conveyor belts



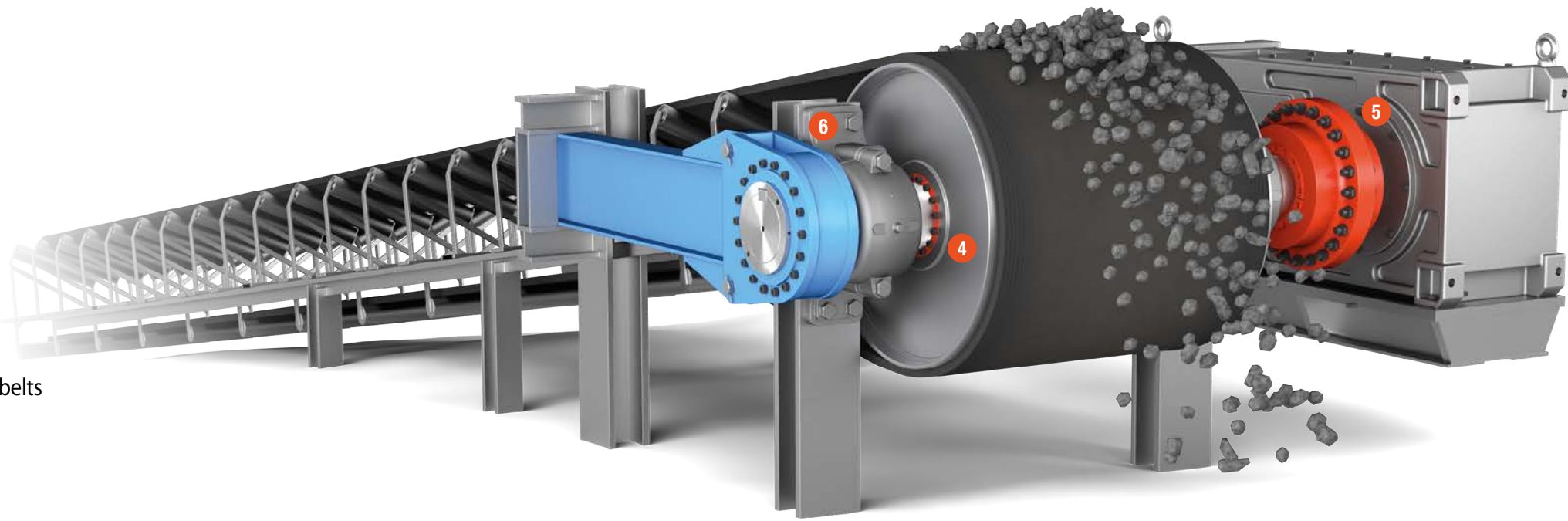
4 Cone Clamping Elements
to connect pulley shafts with pulley drums

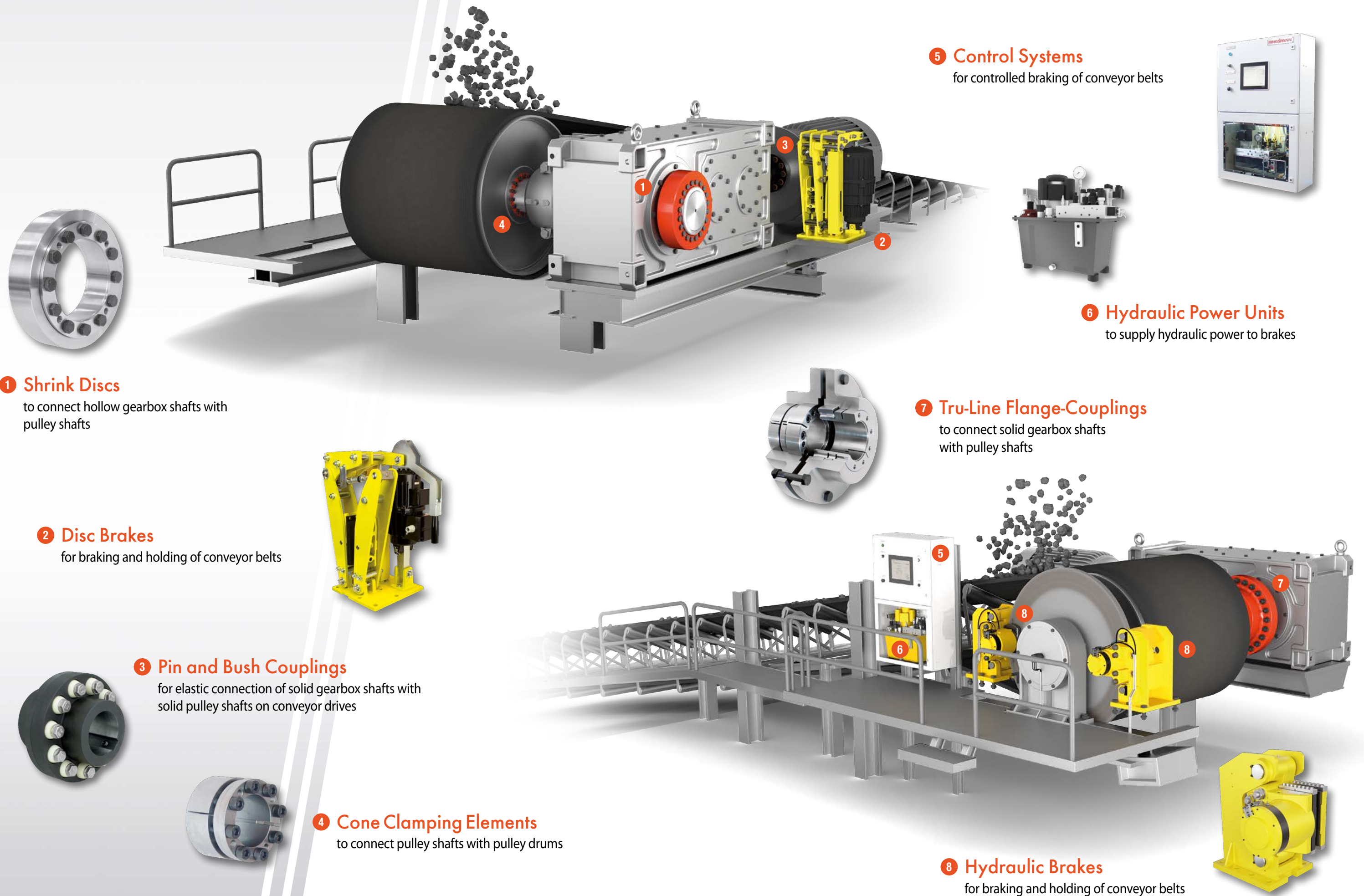


5 Tru-Line Flange-Couplings
to connect solid gearbox shafts
with pulley shafts



6 Low Speed Backstops
to prevent reverse motion of conveyor belts





1 Shrink Discs
to connect hollow gearbox shafts with pulley shafts

2 Disc Brakes
for braking and holding of conveyor belts

3 Pin and Bush Couplings
for elastic connection of solid gearbox shafts with solid pulley shafts on conveyor drives

4 Cone Clamping Elements
to connect pulley shafts with pulley drums

5 Control Systems
for controlled braking of conveyor belts

6 Hydraulic Power Units
to supply hydraulic power to brakes

7 Tru-Line Flange-Couplings
to connect solid gearbox shafts with pulley shafts

8 Hydraulic Brakes
for braking and holding of conveyor belts

1 Shrink Discs

to connect hollow gearbox shafts
with solid bucket elevator shafts



2 High Speed Backstops

to prevent reverse motion of bucket elevators

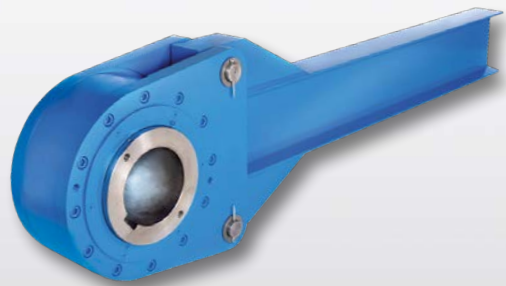


3 Freewheels as Overrunning Clutches

to automatically engage and disengage main drives
and auxiliary drives

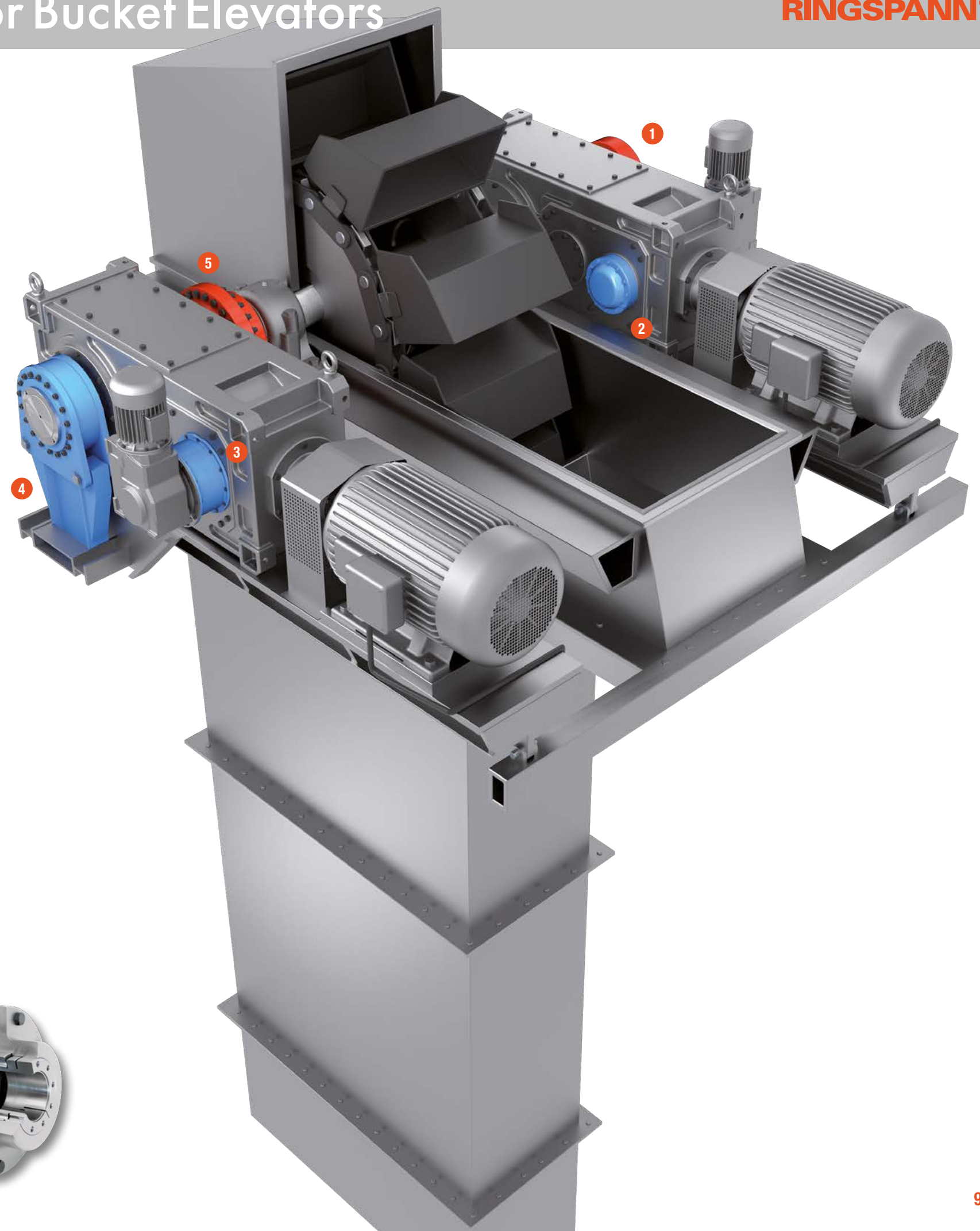
4 Low Speed Backstops

to prevent reverse motion of bucket elevators

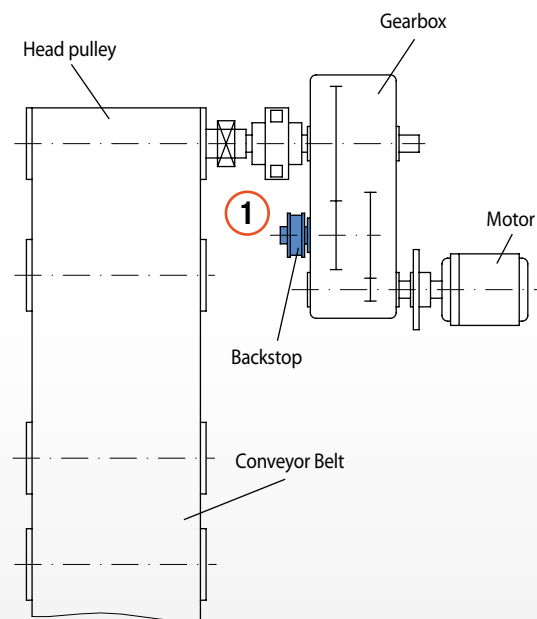


5 Tru-Line Flange-Couplings

to connect solid gearbox shafts
with bucket elevator shafts



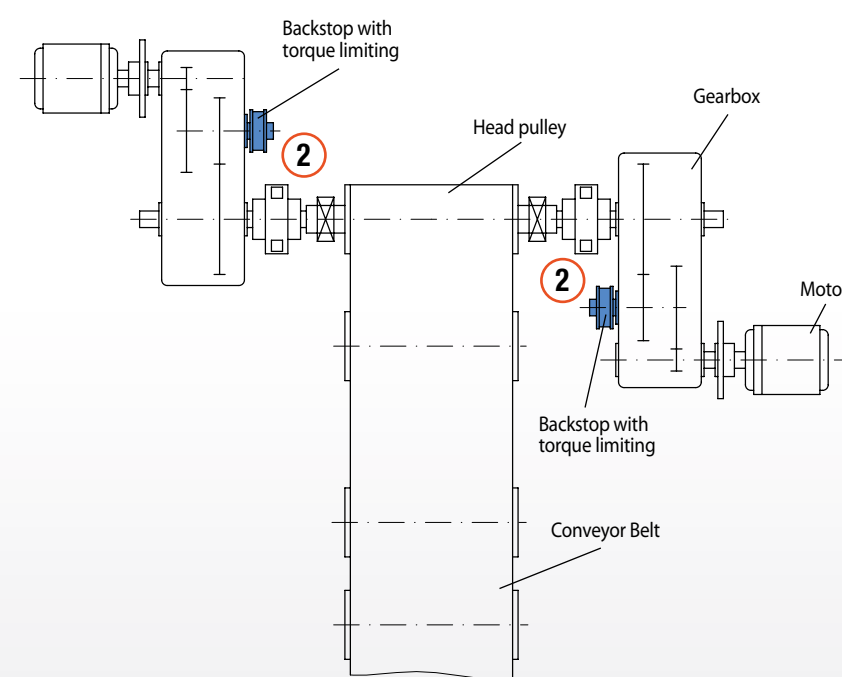
High Speed Backstops



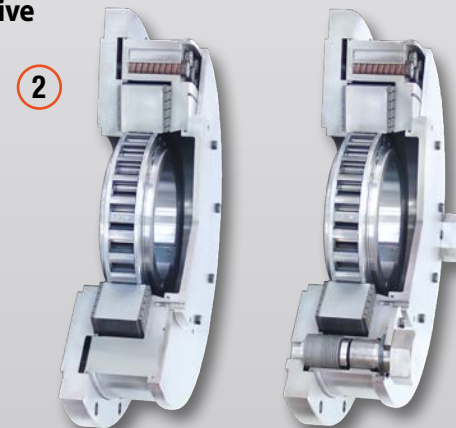
- High Speed Backstops are located on the 2nd or 1st gearbox reduction shaft and **prevent reverse motion** of conveyor belts or bucket elevators.
- They are equipped with sprag lift-off X which ensures a wear free free-wheeling operation when the backstop is rotating at high speeds with the gearbox shaft. In this state of operation, the backstop works wear-free, i.e. with **unlimited service life**.
- **Maintenance free**
- **Cost effective**



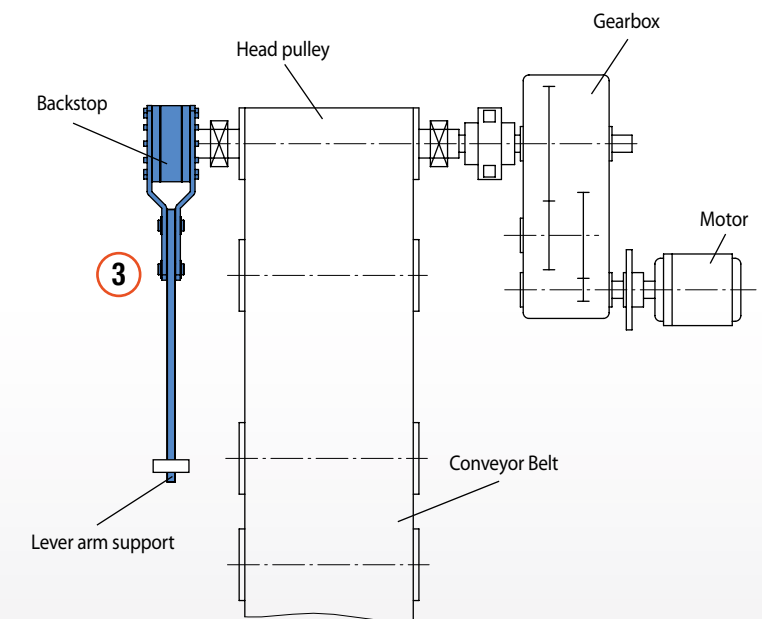
High Speed Backstops with Torque Limiting



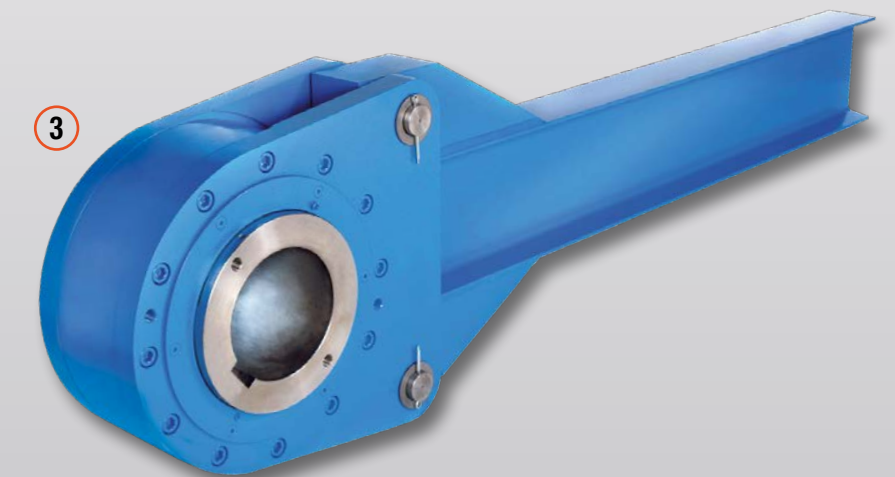
- High Speed Backstops with Torque Limiting are used in belt conveyors with **multiple drives** and **prevent reverse motion of conveyor belts**.
- They **solve the problem of uneven load distribution** in multiple drives.
- They are equipped with sprag lift-off X which ensures a wear free free-wheeling operation when the backstop is rotating at high speeds with the gearbox shaft. In this state of operation, the backstop works wear-free, i.e. with **unlimited service life**.
- **Maintenance free**
- The integrated torque limiters **protect the gearboxes and backstops from overload** by dynamic peak torques.
- **Smaller gearboxes can be used** without negatively affecting the safety.
- Available with or without **controllable release function**.
- **Cost effective**



Low Speed Backstops



- Low Speed Backstops are located to conveyor belt drum shafts or gearbox output shafts and **prevent reverse motion** of conveyor belts or bucket elevators.
- **Taconite seals** protect the backstop from contamination with dust or dirt.
- Low Speed Backstops **allow the removal of the drive unit** when the conveyor belt is loaded.





Tru-Line Flange-Couplings

to connect solid gearbox shafts with solid pulley shafts on conveyor drives



Pin and Bush Couplings

for elastic connection of solid gearbox shafts with solid pulley shafts on conveyor drives

Shrink Discs

- to connect drive units with hollow shafts to bucket wheels
- to connect hollow gearbox shafts with solid pulley shafts on conveyor drives



Cone Clamping Elements

- to connect pulley drums with pulley shafts
- to connect machine elements with shafts

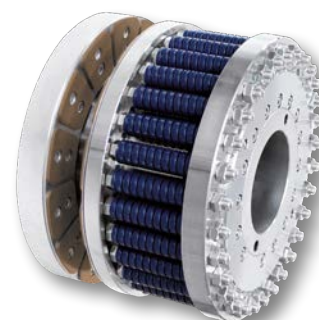


Positive Torque Limiters

to protect drive units from overload

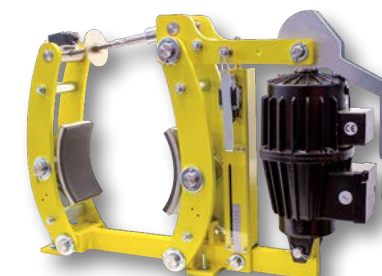
Friction Torque Limiters

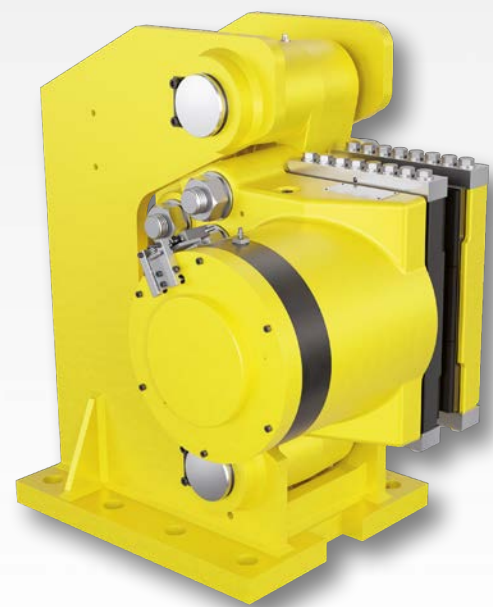
- to protect drive units from overload
- heavy-duty series also available



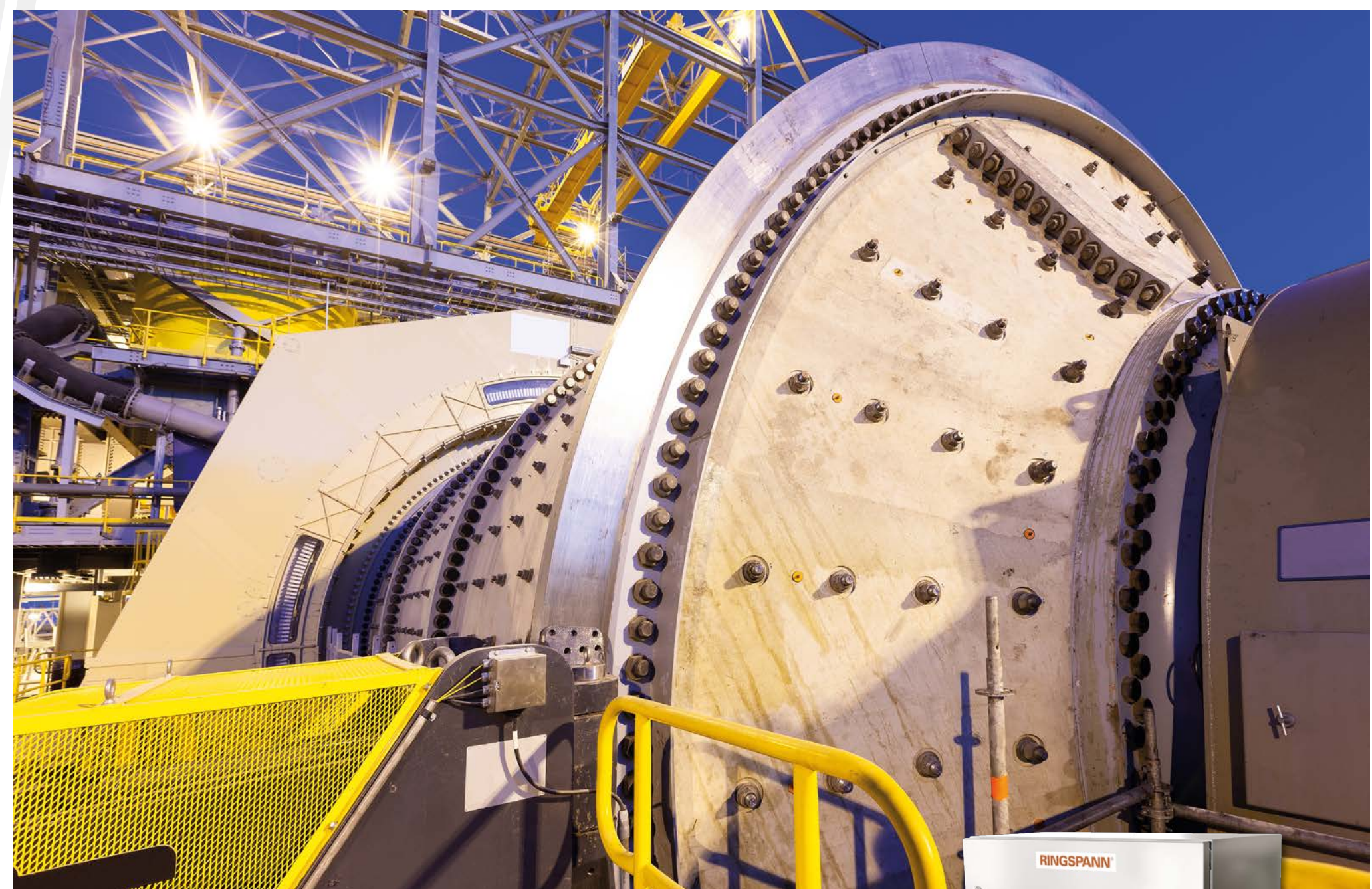
Brakes

- in conveyor drives
- in boom hoist drives
- in slewing drives
- in bucket wheel drives
- in bogie drive





Emergency Brakes
for braking and securing of ball
and grinding mills with up to three
brakes per bracket



Hydraulic Power Units
for controlling emergency brakes



Control Systems
for controlling hydraulic power units
and emergency brakes



Friction Torque Limiters

- to protect drive units from overload
- heavy-duty series also available



Positive Torque Limiters

to protect drive units from overload



Gear Couplings

for torsionally rigid connection of machine shafts



Cone Clamping Elements

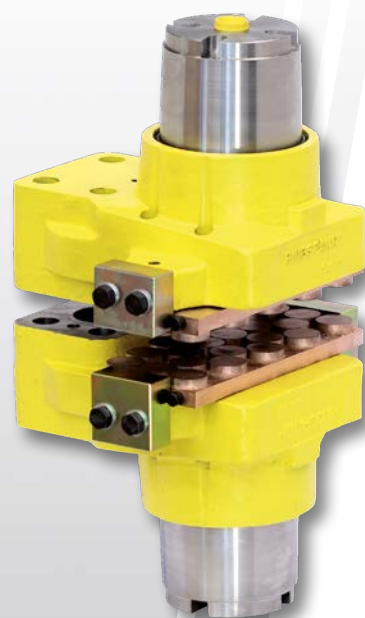
to connect machine elements with shafts



Control Systems
for controlled braking
of mine hoists and winches



Source: Josef Wiegand GmbH & Co. KG



Brakes
for braking and holding
of mine hoists and winches

RINGSPANN®

Your benefit is our motivation

↪ Scan me for more information



www. **RINGSPANN®**.com