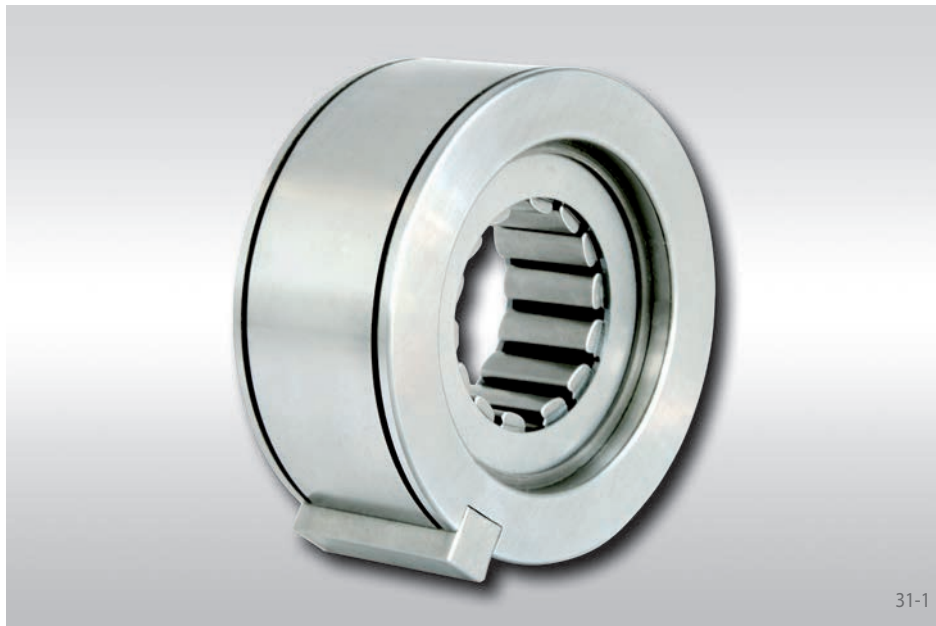


Internal Freewheels RC 500

for keyway connection on the outer ring with sprags



Application as

▶ Backstop

Features

Internal Freewheels RC 500 are shaft mounted and are intended to be used with an adjacent bearing to provide proper concentricity and adequate radial support.

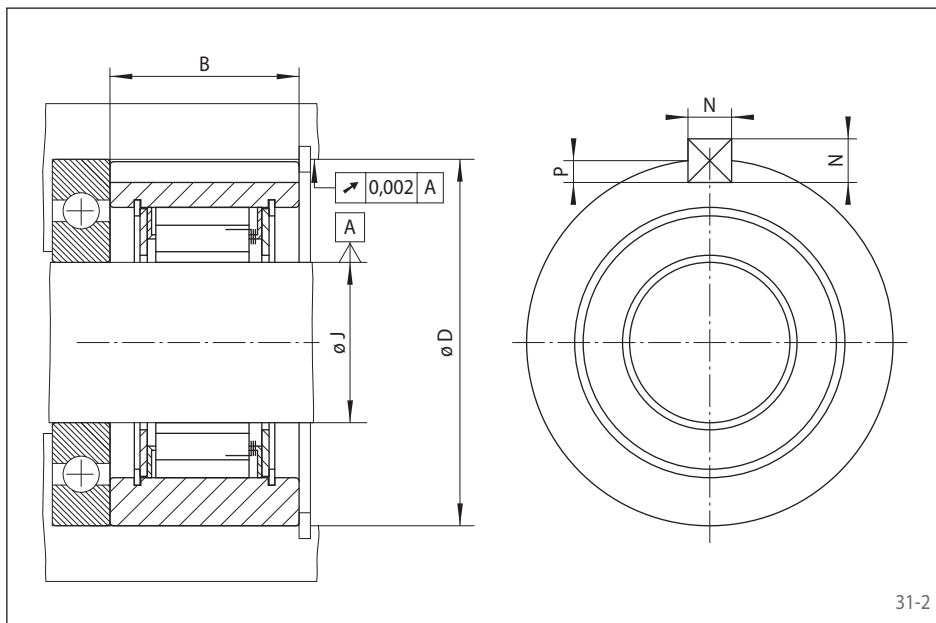
Nominal torques up to 1 250 lb-ft.

Mounting

Internal Freewheels RC 500 require bearing support and a shaft hardened to HRC 58-62 with a 0.060 inch case depth after grinding to a 1.6 Rz micro finish. In addition, eccentricity between the shaft and housing bore should not exceed 0.003 inch T.I.R. with a taper on the shaft not to exceed 0.0002 inch per inch of shaft.

Lubrication

Internal Freewheels RC 500 require lubrication and may be either oil or grease lubricated. Lubrication containing extreme pressure additives must not be used.



Freewheel Size	Nominal torque M _N lb-ft	Housing Bore Diameter D inch	Freewheel Diameter D inch	Width inch	Shaft Diameter J inch	Keyway N x P inch	Bearing w/Same OD	Weight lbs
RC 507	160	2.440	2.4395 / 2.4385	1.125	0.9706 / 0.9696	1/4 x 1/8	6206	1.0
RC 509	250	2.834	2.8332 / 2.8322	1.250	1.1335 / 1.1325	1/4 x 1/8	6207	1.4
RC 510	250	3.149	3.1485 / 3.1470	1.375	1.2965 / 1.2955	3/8 x 3/16	3L10, 6208	2.0
RC 511	525	3.150	3.1490 / 3.1480	1.625	1.3776 / 1.3770	3/8 x 3/16	3L10, 6208	2.2
RC 512	650	3.543	3.5420 / 3.5410	1.625	1.5410 / 1.5400	3/8 x 3/16	3L11, 6210	2.9
RC 513	1 250	4.751	4.7500 / 4.7490	1.750	2.0457 / 2.0447	1/2 x 1/4	XLS-3.25	6.1

See page 9 catalog "Freewheel Clutches" for determination of selection torque.