

Grid Couplings

RES ... EYO and RES ... ETO
elastic



Issue 05/2020 • Technical details subject to change without notice.

Product information



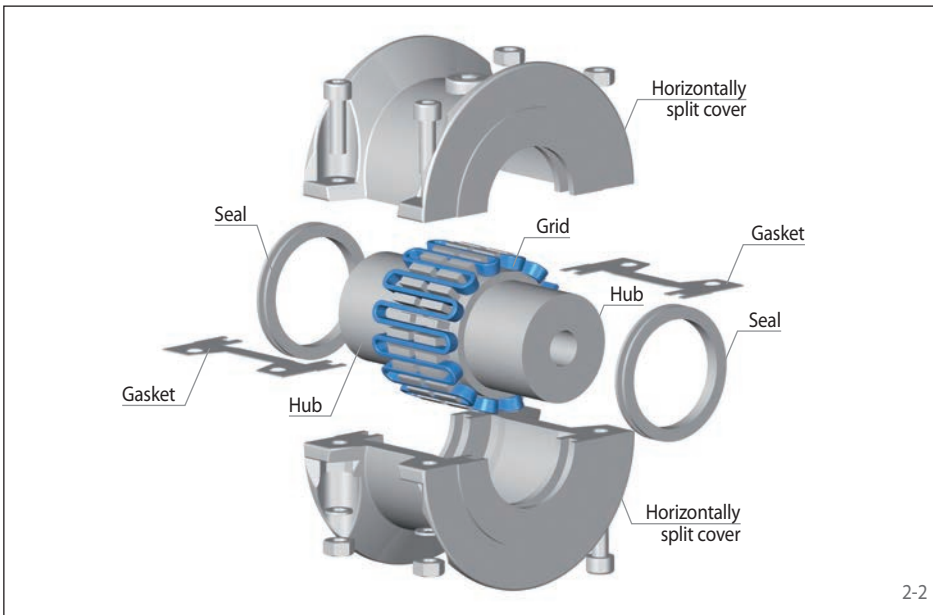
elastic
horizontally split cover



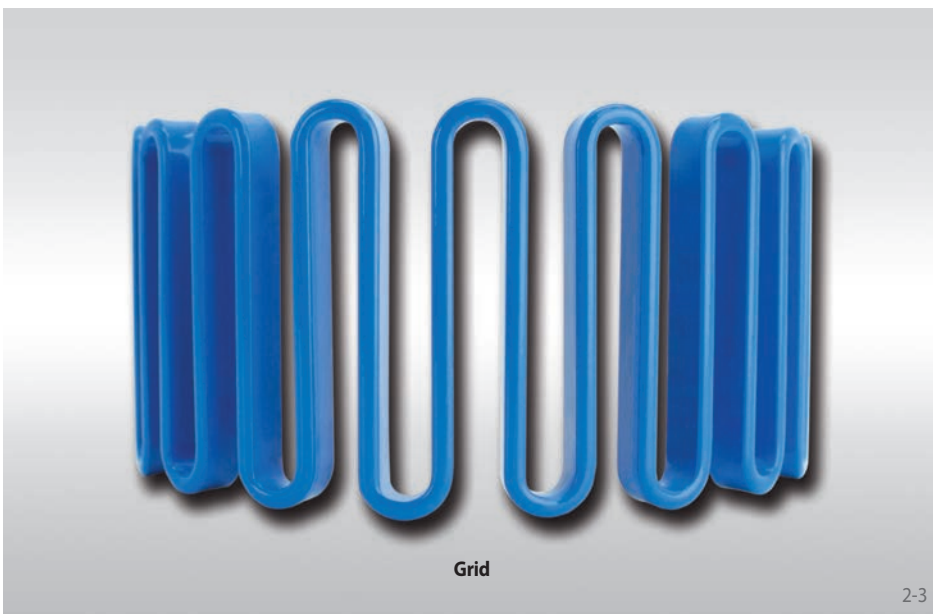
2-1

Features

- High nominal torques up to 2,973,000 inch-lb
- Compensation of axial, radial and angular misalignments
- Gradual increase in torsional rigidity as torques increase
- Horizontally split cover
- Easy replacement of the grid
- Typical application: Crushers, reels, mills, calenders, mixers, belt drives



2-2



Grid

2-3

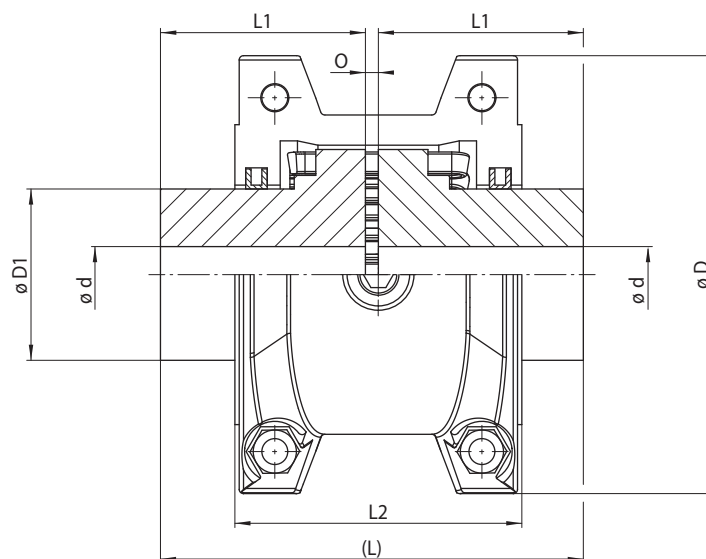
Order example

Order example	Code
Coupling design	RES
Coupling size	1030
Type	EYO
Material of the hub: • Steel	STA
Hub A, type: • 0, standard	0
Hub A, design: • finish bored with keyway • roughbored	FB VA
Bore diameter hub A 7/8" *	ZAO
Hub B, type: • 0, standard	0
Hub B, design: • finish bored with keyway • roughbored	FB VA
Bore diameter hub B 1 1/4" *	ZBE
Grid	ST00

RES 1030 EYO-STA-0FBZAO-0FBZBE-ST00

* For clearance or interference fit imperial bores, please use the appropriate alpha code, per the imperial bore charts on page 6

elastic
horizontally split cover

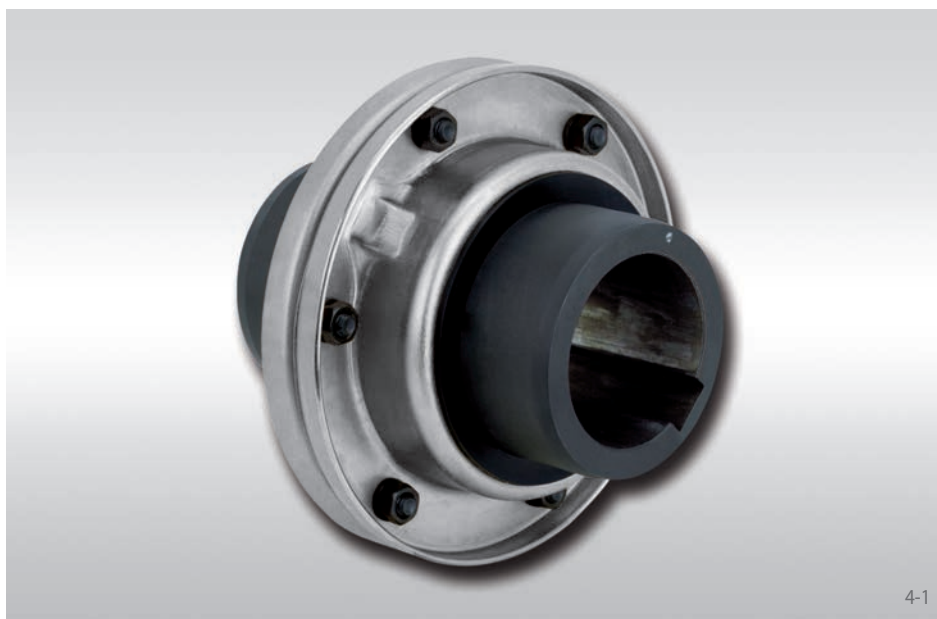


3-1

Coupling size	Nominal torque T_{KN} inch-lb	Nominal power at 100 rpm P_{K100} HP	Max. speed n_{max} rpm	Pilot bore d inch	Bore d		D inch	D1 inch	L inch	L1 inch	L2 inch	O inch	Permissible misalignments			Weight grease filling lbs	Weight with max. bore lbs
					min. inch	max. inch							Axial inch	Radial inch	Angular °		
1020	425	0.7	4,500	-	0.71	1.125	4.00	1.56	3.86	1.87	2.62	0.12	±0.012	0.012	0.25	0.1	4.2
1030	1,200	1.9	4,500	-	0.71	1.375	4.33	1.94	3.86	1.87	2.68	0.12	±0.012	0.012		0.1	5.7
1040	2,000	3.2	4,500	-	0.71	1.625	4.63	2.25	4.11	2.01	2.76	0.12	±0.012	0.012		0.1	7.5
1050	3,500	5.6	4,500	-	0.71	1.875	5.43	2.63	4.86	2.36	3.13	0.12	±0.012	0.016		0.1	12
1060	5,500	8.7	4,350	-	0.79	2.125	5.93	3.00	5.12	2.50	3.62	0.12	±0.012	0.016		0.2	16
1070	8,000	12.7	4,125	-	0.79	2.500	6.38	3.44	6.12	2.99	3.74	0.12	±0.012	0.016		0.2	22
1080	16,500	26.2	3,600	-	1.06	3.000	7.64	4.13	7.13	3.50	4.57	0.12	±0.012	0.016		0.4	40
1090	30,000	47.6	3,600	-	1.06	3.500	8.39	4.87	7.87	3.88	4.80	0.12	±0.012	0.016		0.6	55
1100	50,500	80.1	2,400	-	1.65	4.000	9.84	5.59	9.67	4.74	6.12	0.18	±0.018	0.016		0.9	92
1110	75,000	119	2,250	-	1.65	4.500	10.63	6.31	10.18	5.00	6.36	0.18	±0.018	0.020		1.1	119
1120	100,000	175	2,025	2.24	2.40	5.000	12.13	7.06	11.99	5.89	7.54	0.24	±0.024	0.020		1.6	178
1130	160,000	254	1,800	2.24	2.64	6.000	13.62	8.56	12.99	6.38	7.68	0.24	±0.024	0.022		2.0	266
1140	230,000	365	1,650	2.24	2.64	7.250	15.12	10.00	14.63	7.20	7.91	0.24	±0.024	0.022		2.5	392
1150	320,000	508	1,500	2.24	4.25	8.000	17.83	10.60	14.65	7.20	10.67	0.24	±0.024	0.022		4.3	515
1160	450,000	714	1,350	2.24	4.76	9.000	19.74	12.00	15.83	7.80	10.98	0.24	±0.024	0.024		6.2	697
1170	600,000	952	1,225	2.24	5.28	10.000	22.30	14.00	17.24	8.50	11.97	0.24	±0.024	0.024		7.7	986
1180	832,000	1,320	1,100	4.13	6.02	11.000	24.80	15.50	19.04	9.41	12.64	0.24	±0.024	0.030		8.3	1,362
1190	1,100,000	1,746	1,050	4.13	6.02	12.000	26.59	17.20	20.65	10.20	12.80	0.24	±0.024	0.030		9.7	1,707
1200	1,500,000	2,381	900	4.13	7.01	13.000	29.80	19.60	22.24	11.00	14.00	0.24	±0.024	0.030		12.4	2,328
1210	2,203,500	3,497	820	4.13	7.01	14.000	33.25	21.00	24.51	12.01	17.01	0.50	±0.024	0.030		23.1	3,133
1220	2,973,000	4,719	730	4.13	7.99	15.000	36.24	22.50	26.10	12.80	19.29	0.50	±0.024	0.030	35.4	3,927	

For finish bores, please specify bore diameter hub A and hub B. Metric bores available on request.

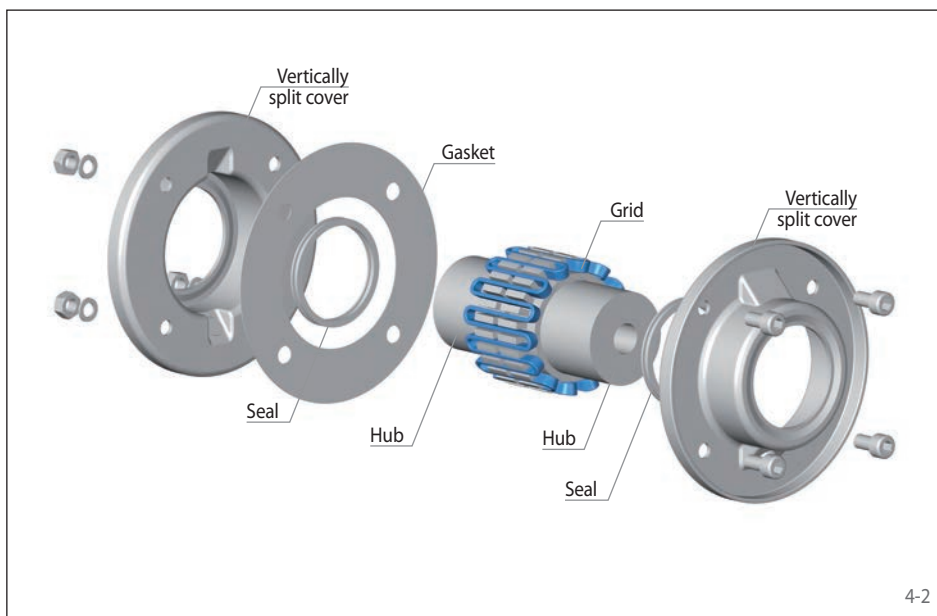
elastic
vertically split cover



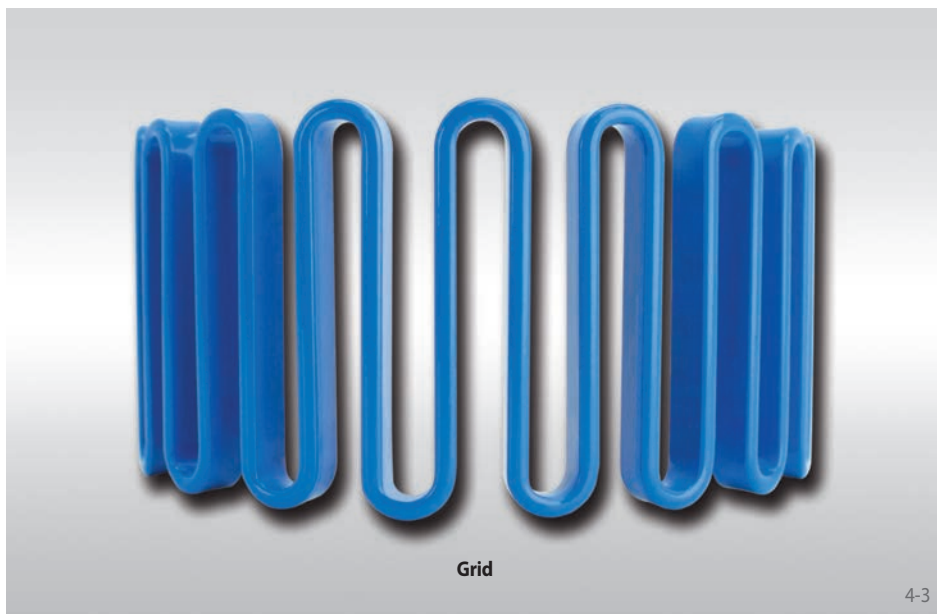
4-1

Features

- Nominal torques up to 1,500,000 inch-lb
- Compensation of axial, radial and angular misalignments
- Gradual increase in torsional rigidity as torques increase
- Vertically split cover
- Easy replacement of the grid
- Typical application: Crushers, reels, mills, calenders, mixers, belt drives



4-2



Grid

4-3

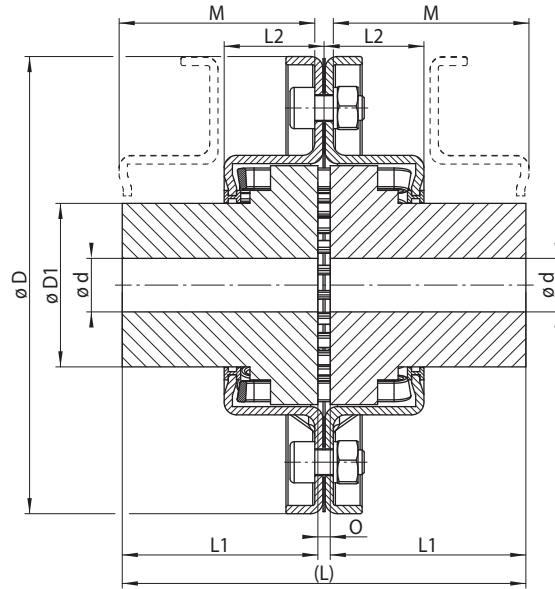
Order example

Order example	Code
Coupling design	RES
Coupling size	1030
Type	ETO
Material of the hub: • Steel	STA
Hub A, type: • 0, standard	0
Hub A, design: • finish bored with keyway • roughbored	FB VA
Bore diameter hub A 7/8" *	ZAO
Hub B, type: • 0, standard	0
Hub B, design: • finish bored with keyway • roughbored	FB VA
Bore diameter hub B 1 1/4" *	ZBE
Grid	ST00

RES 1030 ETO-STA-0FBZAO-0FBZBE-ST00

* For clearance or interference fit imperial bores, please use the appropriate alpha code, per the imperial bore charts on page 6

elastic
vertically split cover



5-1

Coupling size	Nominal torque T _{KN} inch-lb	Nominal power at 100 rpm P _{K100} HP	Max. speed n _{max} rpm	Pilot bore d inch	Bore d		D inch	D1 inch	L inch	L1 inch	L2 inch	M* inch	O inch	Permissible misalignments			Weight grease filling lbs	Weight with max. bore lbs
					min. inch	max. inch								Axial inch	Radial inch	Angular °		
1020	425	0.7	6,000	-	0.71	1.125	4.37	1.56	3.86	1.87	0.94	1.87	0.12	±0.012	0.012	0.25	0.1	4.2
1030	1,200	1.9	6,000	-	0.71	1.375	4.76	1.94	3.86	1.87	0.98	1.87	0.12	±0.012	0.012		0.1	5.7
1040	2,000	3.2	6,000	-	0.71	1.625	5.06	2.25	4.11	2.01	1.00	2.01	0.12	±0.012	0.012		0.1	7.5
1050	3,500	5.6	6,000	-	0.71	1.875	5.81	2.63	4.86	2.38	1.22	2.38	0.12	±0.012	0.016		0.1	12
1060	5,500	8.7	6,000	-	0.79	2.125	6.38	3.00	5.12	2.50	1.26	2.50	0.12	±0.012	0.016		0.2	16
1070	8,000	12.7	5,500	-	0.79	2.500	6.81	3.44	6.12	2.99	1.32	2.99	0.12	±0.012	0.016		0.2	23
1080	16,500	26.2	4,750	-	1.06	3.000	7.87	4.13	7.13	3.50	1.73	3.50	0.12	±0.012	0.016		0.4	39
1090	30,000	47.6	4,000	-	1.06	3.500	9.13	4.87	7.87	3.88	1.87	3.88	0.12	±0.012	0.016		0.6	56
1100	50,500	80.1	3,250	-	1.65	4.000	10.51	5.59	9.67	4.74	2.36	4.74	0.18	±0.018	0.016		0.9	93
1110	75,000	119	3,000	-	1.65	4.500	11.26	6.31	10.18	5.00	2.52	5.00	0.18	±0.018	0.020		1.1	120
1120	100,000	175	2,700	2.24	2.40	5.000	12.56	7.06	11.99	5.87	2.89	5.87	0.24	±0.024	0.020		1.6	180
1130	160,000	254	2,400	2.24	2.64	6.000	14.88	8.56	12.99	6.38	2.95	6.38	0.24	±0.024	0.022		2.0	270
1140	230,000	365	2,200	2.24	2.64	7.250	16.38	10.00	14.63	7.20	3.07	7.20	0.24	±0.024	0.022		2.5	396
1150	320,000	508	2,000	2.24	4.25	8.000	18.76	10.60	14.65	7.20	4.21	7.20	0.24	±0.024	0.022		4.3	506
1160	450,000	714	1,750	2.24	4.76	9.000	21.00	12.00	15.83	7.80	4.51	7.80	0.24	±0.024	0.024		6.2	706
1170	600,000	952	1,600	2.24	5.28	10.000	22.99	14.00	17.24	8.50	4.72	8.50	0.24	±0.024	0.024		7.7	986
1180	832,000	1,320	1,400	4.13	6.02	11.000	24.80	15.50	19.04	9.41	5.12	9.41	0.24	±0.024	0.030		8.3	1,300
1190	1,100,000	1,746	1,300	4.13	6.02	12.000	26.97	17.20	20.63	10.24	5.31	10.20	0.24	±0.024	0.030		9.7	1,674
1200	1,500,000	2,381	1,100	4.13	7.01	13.000	29.02	19.60	22.24	11.00	5.71	11.00	0.24	±0.024	0.030		12.4	2,246

For finish bores, please specify bore diameter hub A and hub B. Metric bores available on request.

* Minimum necessary space to align the shafts.

Design with service factors

The permissible nominal torque of coupling T_{KN} must be at least as high as the nominal torque of the machine T_N with consideration of the operating conditions (service factor S_B).

$$T_{KN} \geq T_N \cdot S_B$$

The nominal torque of the machine T_N results is determined as follows

$$T_N = 63000 \cdot \frac{P_N}{n}$$

Formula symbols

P_N = Nominal power $P_N = P_{AN}$ or P_{LN} [HP]

T_{KN} = Nominal torque of the coupling [in-lb]

T_N = Nominal torque of the machine [in-lb]

Service factor S_B

Machine	Individual applications	Service factor
Agitators	Pure Liquids	1.0
	Liquids-Variable Density	1.0
Blowers	Centrifugal	1.0
	Lobe	1.2
Can Filling Machines		1.0
Car Dumpers		2.0
Car Pullers, Intermittent Duty		1.5
Compressors	Centrifugal	1.0
	Reciprocating	2.2
	Multi-Cylinder	2.0
	Single Cylinder	2.0
Conveyors, Uniformly	Assembly	1.2
	Belt	1.2
	Screw	1.2
Conveyors, Heavy Duty Not Uniformly	Fed Assembly	1.5
	Belt	1.5
	Oven	1.5
	Reciprocating	2.0
	Screw	1.5
	Shaker	1.5
Cranes and Hoists*	Main Hoists	2.0
	Reversing	2.0
	Skip Hoists	2.0
	Trolley Drive	2.0
	Bridge Drive	2.0
Crushers	Ore	3.0
	Stone	3.0
Dredges	Conveyors	2.0
	Cutter Head Drives	2.0
	Maneuvering Winches	2.0
	Pumps	2.0
Fans	Centrifugal	1.0
	Cooling Towers Forced Draft	1.5
Feeders	Screw	1.5
Generators	Not Welding	1.0
	Welding	1.5
	Hammer Mills	2.0
Laundry Washers	Reversing	1.5
Lumber Industry	Barkers - Drum Type	2.0
	Edger Feed	2.0
	Live Rolls	2.0
	Log Haul - Incline	2.0
	Log Haul - Well Type	2.0
	Off Bearing Rolls	2.0
	Planer Feed Chains	1.75
	Planer Tilting Hoist	1.75
	Planer Floor Chains	1.75
	Slab Conveyor	1.5
	Sorting Table	1.5
	Trimmer Feed	1.5

* material transport only

Machine	Individual applications	Service factor
Machine Tools	Bending Roll	2.0
	Punch Press, Gear Driven	2.0
	Tapping Machines	2.0
	Main Drives	1.5
	Auxiliary Drives	1.5
Metal Mills	Draw Bench - Carriage	2.0
	Draw Bench - Main Drive	2.0
	Forming Machines	2.0
	Slitters	1.5
Table Conveyors	Non-Reversing	2.25
	Reversing	2.5
	Wire Drawing & Flattening Machine	2.0
	Wire Winding Machine	1.75
Metal Rolling Mills	Blooming Mills	2.5
	Coilers, Hot Mill	2.0
	Coilers, Cold Mill	1.5
	Cold Mills	2.0
	Cooling Beds	1.75
	Door Openers	2.0
	Draw Benches	2.0
	Edger Drives	1.75
	Feed Rolls, Reversing Mills	3.5
	Furnace Pushers	2.5
	Hot Mills	3.0
	Ingot Cars	2.5
	Kick-outs	2.5
	Manipulators	3.0
	Merchant Mills	3.0
	Piercers	3.0
	Pusher Rams	2.5
	Reel Drives	1.75
	Reel Drums	2.0
	Reelers	3.0
	Rod and Bar Mills	3.0
	Roughing Mill Delivery Table	3.0
	Runout Tables	2.5
	Saws, hot & cold	2.5
	Screwdown Drives	3.0
	Skelp Mills	3.0
	Slitters	3.0
Slabbing Mills	1.75	
Soaking Pit Cover Drives	3.0	
Straighteners	2.5	
Tables, transfer & runout	2.5	
Thrust Block	3.0	
Traction Drive	3.0	
Tube Conveyor Rolls	2.5	
Unscramblers	2.5	
Wire Drawing	1.75	
Mills, Rotary Type	Ball	2.25
	Dryers & Coolers	2.0
	Hammer	1.75
	Kilns	2.0
	Pebble & Rod	2.0
	Pug	1.75
	Tumbling Barrels	2.0

Machine	Individual applications	Service factor
Mixers	Concrete Mixers, Continuous	1.5
	Concrete Mixers, Intermittent	2.0
Oil Industry	Oil Well Pumping	2.0
	Rotary Kilns	2.0
Paper Mills	Agitators, Mixers	1.5
	Barker Auxiliaries, Hydraulic	2.0
	Barker Mechanical	2.0
Barking Drum Spur	Gear Only	2.0
	Beater & Pulper	1.75
	Bleacher	1.0
	Calenders	2.0
	Calenders, Super	1.5
	Chippers	2.5
Converting Machines	Coaters	1.0
	Except Cutters, Platers	1.5
	Conveyors	1.5
	Couch Roll	1.75
	Cutters, Platters	2.0
	Cylinders	1.75
	Disc Refiners	1.75
	Dryers	1.75
	Felt Stretcher	1.25
	Felt Whipper	2.0
	Jordans	1.75
	Line Shaft	1.5
	Log Haul	2.0
	Pulp Grinder	1.75
	Press Roll	2.0
	Reel	1.5
	Stock Chests	1.5
	Suction Roll	1.75
	Washers & Thickeners	1.5
	Winders	1.5
Printing Presses	1.5	
Pumps	Centrifugal	1.0
	Single Acting 3 or more Cylinders	1.5
Pumps, Reciprocating	Double Acting 2 or more Cylinders	2.0
Rotary, Gear Type, Lobe	Vane	1.5
Rubber Industry	Mixer	2.0
	Rubber Calender	2.0
Screens	Rotary, Stone or Gravel	1.5
	Steering Gear	1.0
	Stokers	1.0
Textile Industry	Dryers	1.5
	Dyeing Machinery	1.5
	Windlass	2.0

Alpha values for order code: Imperial dimension bores

Bore and keyway according to AGMA 9002-C14, bore tolerance: interference fit

Bore, whole number	Bore, fractional															
	0	1/16"	1/8"	3/16"	1/4"	5/16"	3/8"	7/16"	1/2"	9/16"	5/8"	11/16"	3/4"	13/16"	7/8"	15/16"
0"	AAA	AAB	AAC	AAD	AAE	AAF	AAG	AAH	AAI	AAJ	AAK	AAL	AAM	AAN	AAO	AAP
1"	ABA	ABB	ABC	ABD	ABE	ABF	ABG	ABH	ABI	ABJ	ABK	ABL	ABM	ABN	ABO	ABP
2"	ACA	ACB	ACC	ACD	ACE	ACF	ACG	ACH	ACI	ACJ	ACK	ACL	ACM	ACN	ACO	ACP
3"	ADA	ADB	ADC	ADD	ADE	ADF	ADG	ADH	ADI	ADJ	ADK	ADL	ADM	ADN	ADO	ADP
4"	AEA	AEB	AEC	AED	AEE	AEF	AEG	AEH	AEI	AEJ	AEK	AEL	AEM	AEN	AEO	AEP
5"	AFA	AFB	AFC	AFD	AFE	AFF	AFG	AFH	AFI	AFJ	AFK	AFL	AFM	AFN	AFO	AFP
6"	AGA	AGB	AGC	AGD	AGE	AGF	AGG	AGH	AGI	AGJ	AGK	AGL	AGM	AGN	AGO	AGP
7"	AHA	AHB	AHC	AHD	AHE	AHF	AHG	AHH	AHI	AHJ	AHK	AHL	AHM	AHN	AHO	AHP
8"	AIA	AIB	AIC	AID	AIE	AIF	AIG	AIH	AII	AIJ	AIK	AIL	AIM	AIN	AIO	AIP
9"	AJA	AJB	AJC	AJD	AJE	AJF	AJG	AJH	AJI	AJJ	AJK	AJL	AJM	AJN	AJO	AJP
10"	AKA	AKB	AKC	AKD	AKE	AKF	AKG	AKH	AKI	AKJ	AKK	AKL	AKM	AKN	AKO	AKP
11"	ALA	ALB	ALC	ALD	ALE	ALF	ALG	ALH	ALI	ALJ	ALK	ALL	ALM	ALN	ALO	ALP
12"	AMA	AMB	AMC	AMD	AME	AMF	AMG	AMH	AMI	AMJ	AMK	AML	AMM	AMN	AMO	AMP
13"	ANA	ANB	ANC	AND	ANE	ANF	ANG	ANH	ANI	ANJ	ANK	ANL	ANM	ANN	ANO	ANP
14"	AOA	AOB	AOC	AOD	AOE	AOF	AOG	AOH	AOI	AOJ	AOK	AOL	AOM	AON	AOO	AOP
15"	APA	APB	APC	APD	APE	APF	APG	APH	API	APJ	APK	APL	APM	APN	APO	APP
16"	AQA	AQB	AQC	AQD	AQE	AQF	AQG	AQH	AQI	AQJ	AQK	AQL	AQM	AQN	AQO	AQP
17"	ARA	ARB	ARC	ARD	ARE	ARF	ARG	ARH	ARI	ARJ	ARK	ARL	ARM	ARN	ARO	ARP
18"	ASA	ASB	ASC	ASD	ASE	ASF	ASG	ASH	ASI	ASJ	ASK	ASL	ASM	ASN	ASO	ASP
19"	ATA	ATB	ATC	ATD	ATE	ATF	ATG	ATH	ATI	ATJ	ATK	ATL	ATM	ATN	ATO	ATP
20"	AUA	AUB	AUC	AUD	AUE	AUF	AUG	AUH	AUI	AUJ	AUK	AUL	AUM	AUN	AUO	AUP
21"	AVA	AVB	AVC	AVD	AVE	AVF	AVG	AVH	AVI	AVJ	AVK	AVL	AVM	AVN	AVO	AVP
22"	AWA	AWB	AWC	AWD	AWE	AWF	AWG	AWH	AWI	AWJ	AWK	AWL	AWM	AWN	AWO	AWP
23"	AXA	AXB	AXC	AXD	AXE	AXF	AXG	AXH	AXI	AXJ	AXK	AXL	AXM	AXN	AXO	AXP

Bore and keyway according to AGMA 9002-C14, bore tolerance: clearance fit

Bore, whole number	Bore, fractional															
	0	1/16"	1/8"	3/16"	1/4"	5/16"	3/8"	7/16"	1/2"	9/16"	5/8"	11/16"	3/4"	13/16"	7/8"	15/16"
0"	ZAA	ZAB	ZAC	ZAD	ZAE	ZAF	ZAG	ZAH	ZAI	ZAJ	ZAK	ZAL	ZAM	ZAN	ZAO	ZAP
1"	ZBA	ZBB	ZBC	ZBD	ZBE	ZBF	ZBG	ZBH	ZBI	ZBJ	ZBK	ZBL	ZBM	ZBN	ZBO	ZBP
2"	ZCA	ZCB	ZCC	ZCD	ZCE	ZCF	ZCG	ZCH	ZCI	ZCJ	ZCK	ZCL	ZCM	ZCN	ZCO	ZCP
3"	ZDA	ZDB	ZDC	ZDD	ZDE	ZDF	ZDG	ZDH	ZDI	ZDJ	ZDK	ZDL	ZDM	ZDN	ZDO	ZDP
4"	ZEA	ZEB	ZEC	ZED	ZEE	ZEF	ZEG	ZEH	ZEI	ZEJ	ZEK	ZEL	ZEM	ZEN	ZEO	ZEP
5"	ZFA	ZFB	ZFC	ZFD	ZFE	ZFF	ZFG	ZFH	ZFI	ZFJ	ZFK	ZFL	ZFM	ZFN	ZFO	ZFP
6"	ZGA	ZGB	ZGC	ZGD	ZGE	ZGF	ZGG	ZGH	ZGI	-	-	-	-	-	-	-

Germany**RINGSPANN GmbH**

Schaberweg 30 - 38, 61348 Bad Homburg, Germany
+49 61 72 2750
info@ringspann.de • www.ringspann.de

RINGSPANN RCS GmbH

Hans-Mess-Straße 7, 61440 Oberursel, Germany
+49 61 72 67 6850
info@ringspann-rcs.de • www.ringspann-rcs.de

France**SIAM - RINGSPANN S.A.**

23 rue Saint-Simon, 69009 Lyon, France
+33 4 78 83 5901
info@siam-ringspann.fr • www.ringspann.fr

Great Britain, Ireland**RINGSPANN (U.K.) LTD.**

3, Napier Road, Bedford MK41 0QS, Great Britain
+44 12 34 34 25 11
info@ringspann.co.uk • www.ringspann.co.uk

Italy**RINGSPANN Italia S.r.l.**

Via A.D. Sacharov, 13, 20812 Limbiate (MB), Italy
+39 02 93 57 12 97
info@ringspann.it • www.ringspann.it

Netherlands, Belgium, Luxembourg**RINGSPANN Benelux B.V.**

Nieuwenkampsmaten 6-15, 7472 DE Goor,
Netherlands • +31 547 26 13 55
info@ringspann.nl • www.ringspann.nl

Austria, Hungary, Slovenia**RINGSPANN Austria GmbH**

Kleegasse 9, 2624 Breitenau, Austria
+43 26 35 62446
info@ringspann.at • www.ringspann.at

Poland

Radius-Radpol Wiecheć Sp.J.

ul. Kolejowa 16 b, 60-185 Skórzewo, Poland
+48 61 814 39 28 • info@radius-radpol.com.pl
www.radius-radpol.com.pl

Romania, Bulgaria, Moldova

S.C. Industrial Seals and Rolls S.R.L.

Str. Depozitelor, No. 29, 110078 Pitesti, Romania
+4 0751 22 82 28
mihai@isar.com.ro • www.isar.com.ro

Russia, Belarus, Kazakhstan

RINGSPANN Office

Pod'jermnaja Street 12, Building 1, Floor 4,
Office 426, 109052 Moscow, Russia
+7 495 911 86 48
Denis.Kalashnikov@ringspann.com
www.ringspann.com.ru

Sweden, Finland, Denmark, Norway,**Baltic states****RINGSPANN Nordic AB**

Industrigatan 7, 61933 Trosa, Sweden
+46 156 190 98
info@ringspann.se • www.ringspann.se

Switzerland**RINGSPANN AG**

Sumpfstrasse 7, P.O. Box 3320, 6303 Zug,
Switzerland • +41 41 748 0900
info@ringspann.ch • www.ringspann.ch

Spain, Portugal**RINGSPANN IBERICA S.A.**

C/Uzbina, 24-Nave E1, 01015 Vitoria, Spain
+34 945 22 77 50
info@ringspann.es • www.ringspann.es

Czech Republic, Slovakia

Ing. Petr Schejbal

Mezivříš 1444/27, 14700 Prag, Czech Republic
+420 222 96 90 22
Petr.Schejbal@ringspann.cz • www.ringspann.com

Ukraine

"START-UP" LLC.

Saltivske Hwy, 43, letter G-3, office 101,
Kharkiv 61038, Ukraine • +38 057 717 03 04
start-up@start-up.kh.ua • www.start-up.kh.ua

Asia

Australia, New Zealand**RINGSPANN Australia Pty Ltd**

Unit 5, 13A Elite Way, Carrum Downs Vic 3201,
Australia • +61 3 9069 0566
info@ringspann.com.au • www.ringspann.com.au

China, Taiwan**RINGSPANN Power Transmission (Tianjin) Co., Ltd.**

No. 21 Gaoyan Rd., Binhai Science and Technology
Park, Binhai Hi-Tech Industrial, Development Area,
Tianjin, 300458, P.R. China • +86 22 5980 31 60
info.cn@ringspann.cn • www.ringspann.cn

India, Bangladesh, Nepal**RINGSPANN Power Transmission India Pvt. Ltd.**

GAT No: 679/2/1, Village Kuruli, Taluka Khed, Chakan-
Alandi Road, Pune - 410501, Maharashtra, India
+91 21 35 67 75 00 • info@ringspann-india.com
www.ringspann-india.com

Singapore, ASEAN**RINGSPANN Singapore Pte. Ltd.**

143 Cecil Street, #17-03 GB Building,
Singapore 069542 • +65 9633 6692
info@ringspann.sg • www.ringspann.sg

South Korea**RINGSPANN Korea Ltd.**

Chungnam Cheonan-si Dongnam-gu
Mokcheon-eup Samsung 1 Ghil 15-12,
31226, South Korea • +82 10 54961 368
info@ringspann.kr • www.ringspann.kr

America

Brazil

Antares Acoplamentos Ltda.

Rua Evaristo de Antoni, 1222, Caxias do Sul, RS,
CEP 95041-000, Brazil • +55 54 32 18 68 00
vendas@antaresacoplamentos.com.br
www.antaresacoplamentos.com.br

USA, Canada, Mexico, Chile, Peru**RINGSPANN Corporation**

10550 Anderson Place, Franklin Park, IL 60131, U.S.A
+1 847 678 35 81
info@ringspanncorp.com • www.ringspanncorp.com

Africa and Middle East

Egypt

Shofree Trading Co.

218 Emtedad Ramsis 2, 2775 Nasr City, Cairo, Egypt
+20 2 20 81 20 57
info@shofree.com • www.ringspann.com

Iran

Persia Robot Machine Co. Ltd.

4th Floor, No 71, Mansour St, Motahari Avenue,
Tehran 15957, Iran • +98 21 88 70 91 58-62
info@persiarobot.com • www.ringspann.com

Israel

G.G. Yarom Rolling and Conveying Ltd.

6, Hamaktesh Str., 58810 Holon, Israel
+972 3 557 01 15
noam_a@gg.co.il • www.ringspann.com

Maghreb, West Africa**SIAM - RINGSPANN S.A.**

23 rue Saint-Simon, 69009 Lyon, France
+33 4 78 83 59 01
info@siam-ringspann.fr • www.ringspann.fr

South Africa, Sub-Saharan**RINGSPANN South Africa (Pty) Ltd.**

96 Plane Road Spartan, Kempton Park,
P.O. Box 8111 Edenglen 1613, South Africa
+27 11 394 18 30
info@ringspann.co.za • www.ringspann.co.za