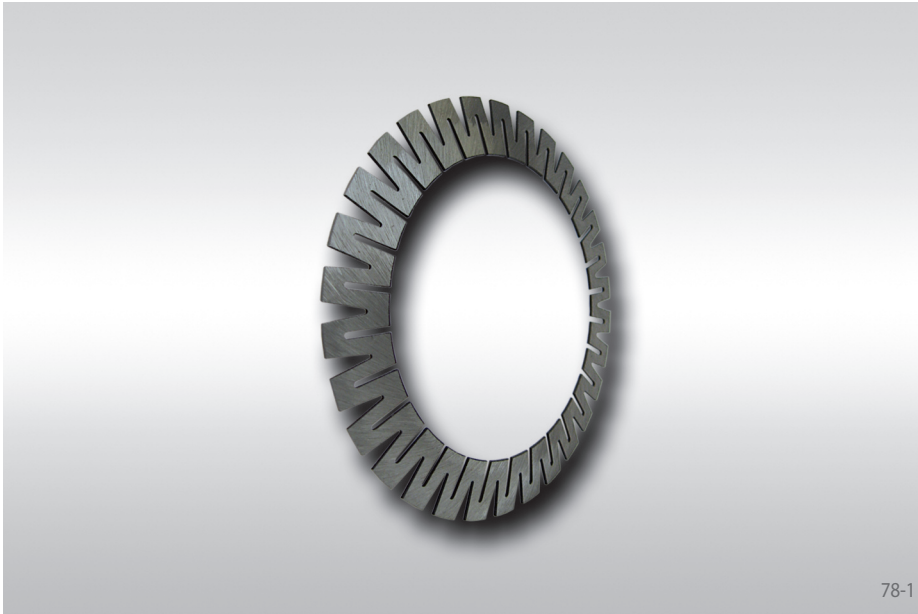


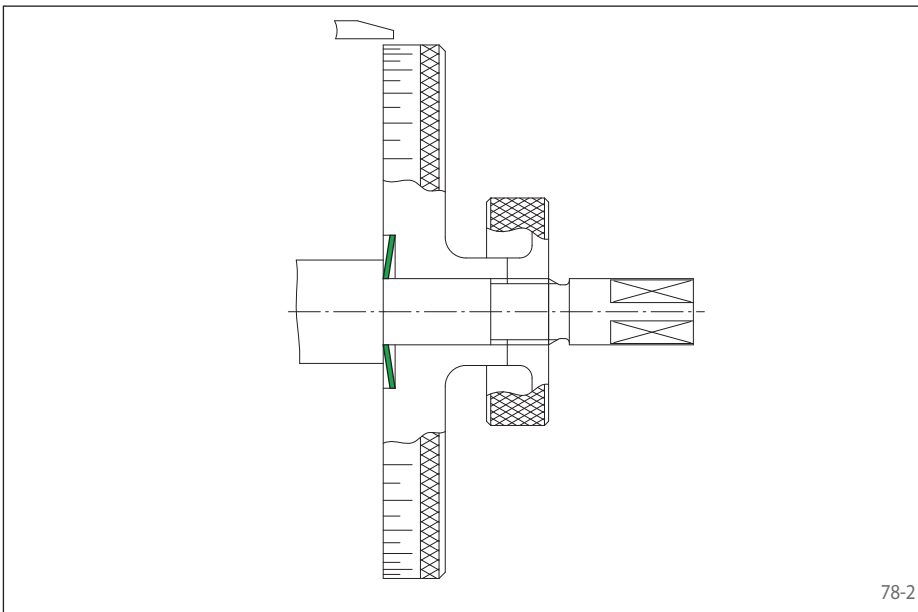
for frequent clamping and loosening
short axial width



78-1

Features

- For frequent clamping and release
- Short axial width
- Adjustable to the required torque by multiple arrangements in the form of disc packs
- Low actuating force required, thus ideal for manual actuation



78-2

Application example

Backlash free attachment of a graduated dial in a feed unit with a Star Disc. After release of the right knurled nut, the dial can be adjusted in circumferential direction.

Transmissible torques

The transmissible torques listed on the following page are subject to the following information about disc pack, tolerances, surface characteristics and material requirements. Please contact us in the case of deviations.

Disc Pack

The torque M stated in the table applies for one star disc. In case of multiple arrangements of star discs in disc packs of up to 16 star discs, the following applies:

| | |
|--------------------------|-------------------------|
| Torque | $M_n = n \cdot M$ |
| Preload force | $E_n = n \cdot E$ |
| Load-bearing axial width | $L_1 \approx n \cdot s$ |

Tolerances

- h9 for shaft diameter d
- H9 for hub bore D

Surfaces

Average surface roughness at the contact surfaces between the shaft and the hub bore:
 $R_z = 10 \dots 25 \mu\text{m}$.

Materials

The following apply to the shaft and the hub:

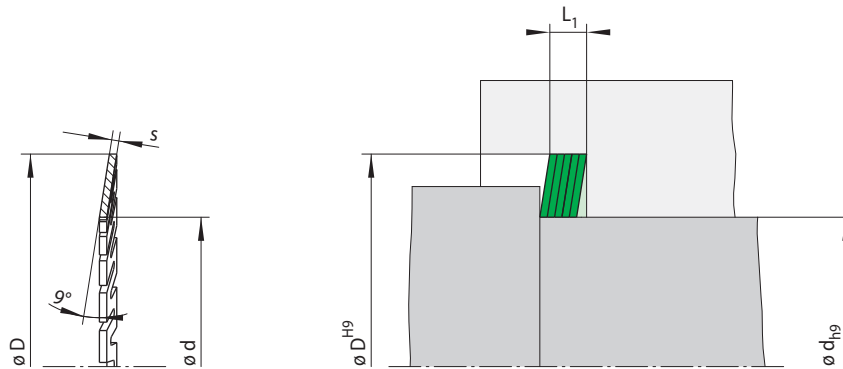
- Yield strength $R_e \geq 300 \text{ N/mm}^2$
- E-module $\geq 170 \text{ kN/mm}^2$

Example for ordering

100 Star Discs for shaft diameter $d = 20 \text{ mm}$:

- 100 pcs. A 20 SS 37
Article number 1032-037004-000000

for frequent clamping and loosening
short axial width



79-1

79-2

| Dimensions | | | Technical Data | | | | | Type | Article number |
|------------|-----------------|---------|------------------------------------|--|-----------------------------------|----------------------------|-------------------------|--------------|--------------------|
| d mm | Size D mm | s mm | Transmissible torque M Nm | Contact pressure at Shaft P_W N/mm ² | Hub P_N N/mm ² | Preload force E N | Weight kg/100 pieces | | |
| 4 | 14 | 0,50 | 0,16 | 100 | 29 | 140 | 0,3 | A 4 SS 14 | 1032-014002-000000 |
| 5 | 14 | 0,50 | 0,29 | 116 | 41 | 210 | 0,3 | A 5 SS 14 | 1032-014003-000000 |
| 6 | 18 | 0,50 | 0,34 | 94 | 31 | 180 | 0,5 | A 6 SS 18 | 1032-018001-000000 |
| 8 | 18 | 0,50 | 0,72 | 113 | 50 | 310 | 0,5 | A 8 SS 18 | 1032-018003-000000 |
| 10 | 22 | 0,60 | 1,26 | 105 | 48 | 430 | 0,9 | A 10 SS 22 | 1032-022002-000000 |
| 11 | 22 | 0,60 | 1,53 | 105 | 53 | 500 | 0,8 | A 11 SS 22 | 1032-022003-000000 |
| 12 | 27 | 0,65 | 1,95 | 104 | 46 | 520 | 1,4 | A 12 SS 27 | 1032-027001-000000 |
| 14 | 27 | 0,65 | 2,80 | 110 | 57 | 680 | 1,3 | A 14 SS 27 | 1032-027003-000000 |
| 15 | 27 | 0,65 | 3,30 | 113 | 63 | 770 | 1,2 | A 15 SS 27 | 1032-027004-000000 |
| 16 | 37 | 0,90 | 5,10 | 111 | 48 | 1030 | 3,7 | A 16 SS 37 | 1032-037001-000000 |
| 17 | 37 | 0,90 | 5,90 | 113 | 52 | 1150 | 3,6 | A 17 SS 37 | 1032-037002-000000 |
| 18 | 37 | 0,90 | 6,80 | 117 | 57 | 1270 | 3,5 | A 18 SS 37 | 1032-037003-000000 |
| 20 | 37 | 0,90 | 8,70 | 121 | 65 | 1540 | 3,2 | A 20 SS 37 | 1032-037004-000000 |
| 22 | 42 | 0,90 | 9,90 | 114 | 60 | 1490 | 4,3 | A 22 SS 42 | 1032-042001-000000 |
| 24 | 42 | 0,90 | 12,2 | 118 | 67 | 1760 | 4,0 | A 24 SS 42 | 1032-042002-000000 |
| 25 | 42 | 0,90 | 13,5 | 120 | 71 | 1900 | 3,8 | A 25 SS 42 | 1032-042003-000000 |
| 28 | 52 | 1,15 | 21,0 | 116 | 63 | 2550 | 8,2 | A 28 SS 52 | 1032-052001-000000 |
| 30 | 52 | 1,15 | 25,0 | 121 | 70 | 2900 | 7,7 | A 30 SS 52 | 1032-052002-000000 |
| 35 | 52 | 1,15 | 33,5 | 119 | 80 | 3750 | 6,3 | A 35 SS 52 | 1032-052004-000000 |
| 38 | 62 | 1,15 | 40,5 | 122 | 75 | 3600 | 10,2 | A 38 SS 62 | 1032-062001-000000 |
| 40 | 62 | 1,15 | 45,5 | 124 | 80 | 4000 | 9,5 | A 40 SS 62 | 1032-062002-000000 |
| 42 | 62 | 1,15 | 51,0 | 126 | 85 | 4450 | 8,8 | A 42 SS 62 | 1032-062003-000000 |
| 45 | 62 | 1,15 | 60,0 | 129 | 94 | 5200 | 7,7 | A 45 SS 62 | 1032-062004-000000 |
| 48 | 70 | 1,15 | 68,0 | 128 | 88 | 5000 | 11,0 | A 48 SS 70 | 1032-070001-000000 |
| 50 | 70 | 1,15 | 75,0 | 130 | 93 | 5500 | 10,2 | A 50 SS 70 | 1032-070002-000000 |
| 55 | 70 | 1,15 | 93,0 | 134 | 105 | 7000 | 8,0 | A 55 SS 70 | 1032-070003-000000 |
| 60 | 80 | 1,15 | 112 | 135 | 101 | 6800 | 11,9 | A 080 060 IV | 1032-080001-000000 |
| 65 | 90 | 1,15 | 131 | 135 | 97 | 6700 | 16,5 | A 090 065 IV | 1032-090001-000000 |
| 70 | 90 | 1,15 | 154 | 137 | 106 | 8000 | 13,6 | A 090 070 IV | 1032-090002-000000 |
| 75 | 100 | 1,15 | 176 | 136 | 102 | 7800 | 18,6 | A 100 075 IV | 1032-100001-000000 |
| 80 | 100 | 1,15 | 205 | 139 | 111 | 9300 | 15,3 | A 100 080 IV | 1032-100002-000000 |
| 85 | 110 | 1,15 | 230 | 138 | 107 | 9000 | 20,7 | A 110 085 IV | 1032-110001-000000 |
| 100 | 120 | 1,15 | 325 | 141 | 118 | 11900 | 18,7 | A 120 100 IV | 1032-120001-000000 |