

Brake Caliper DT 315 FEA ... H - ST

spring activated – electrohydraulically released
Drum Brake according to DIN 15 435



Figure shows product with special equipment: micro-switch wear control and hand release lever.

6-1

Features	Code
Brake Caliper	D
Drum Brake	T
Frame size 315	315
Spring activated	F
Electrohydraulically released	E
Automatic adjustment to accommodate friction block wear	A
Thrustors 451, 452 or 453 are available	451 452 453
Thrustor mounted horizontally	H
Material: steel	ST

Example for ordering

Brake Caliper DT 315 FEA, thrustor 451, thrustor mounted horizontally, material: steel

DT 315 FEA - 451 H - ST

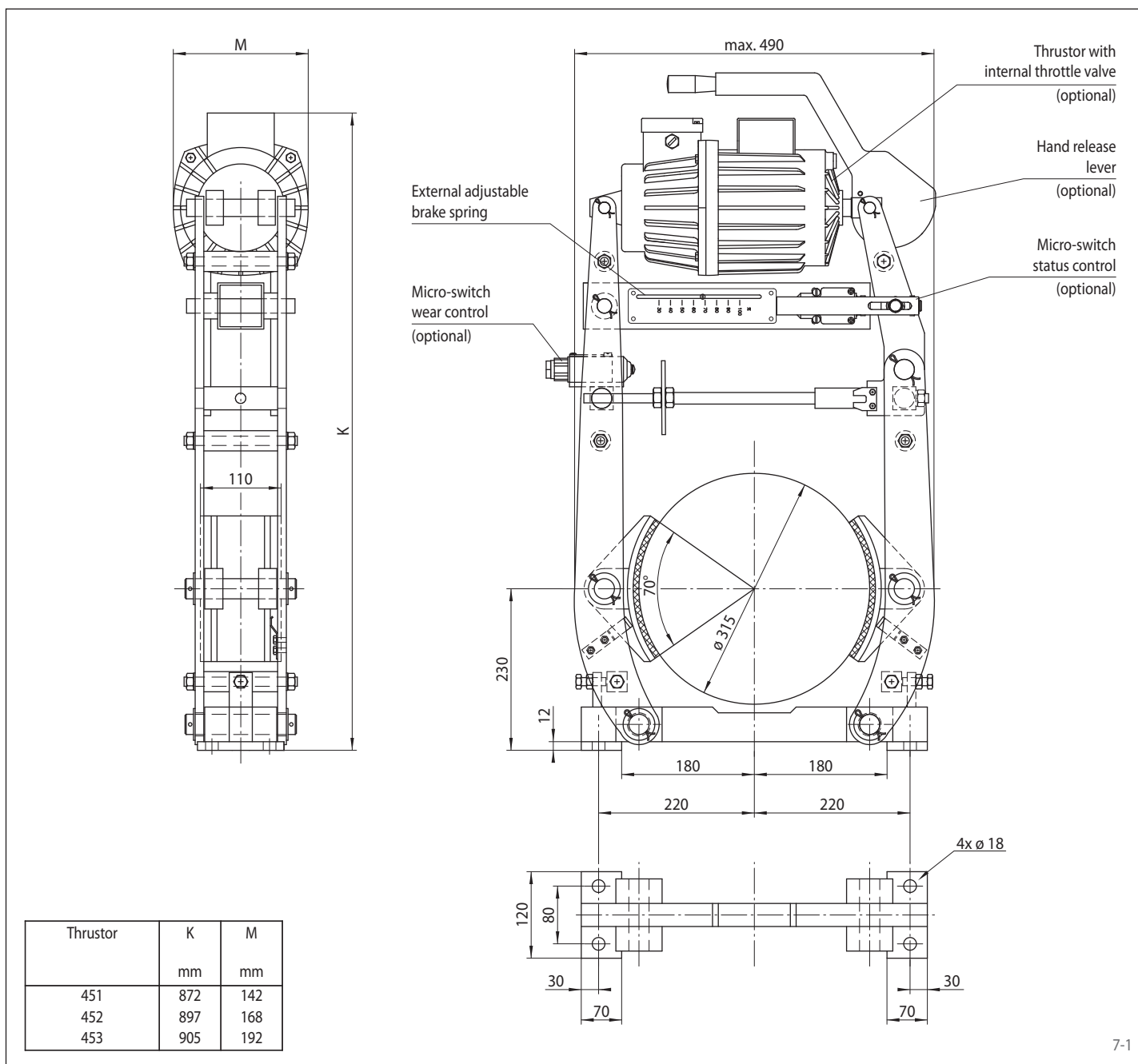
Technical Data

	Brake Caliper DT 315 FEA - ... H - ST		
	with thrustor 451	with thrustor 452	with thrustor 453
Brake drum diameter	Braking torque	Braking torque	Braking torque
mm	Nm	Nm	Nm
315	255	350	700
Clamping force	2024 N	2778 N	5556 N
Braking torque adjustable (optional)	20 - 100%	20 - 100%	20 - 100%
Power input	130 W	180 W	250 W
Oil volume	1,3l	2,5l	3,5l
Voltage	230/400 V	230/400 V	230/400 V
Weight	80 kg	85 kg	90 kg

The braking torques shown in the table are based on a theoretical friction coefficient of 0,4.

Brake Caliper DT 315 FEA ... H - ST

spring activated – electrohydraulically released
 Drum Brake according to DIN 15 435



7-1

Options

- Micro-switch wear control
- Micro-switch status control
- Hand release lever
- Thrustor with internal throttle valve
- Thrustor in heat resistant design
- Corrosion protected design
- Wider brake shoes and brake drums